

# Industry

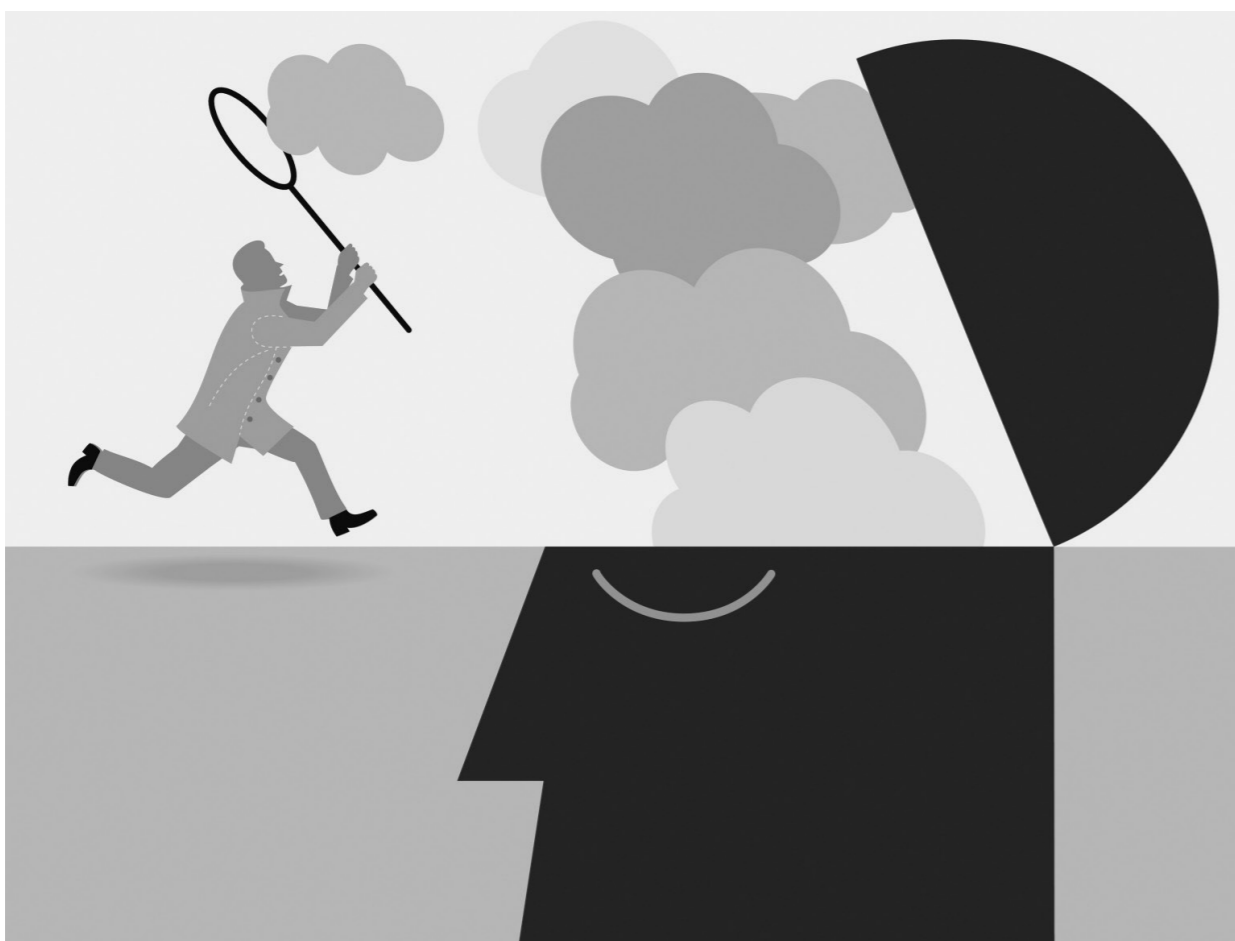
Greenhouse gas (GHG) emissions from industry represents almost **30% of global GHG emissions and around 75% of that is energy-related**

With energy efficiency improvement, industrial **energy use can be reduced by 40%**

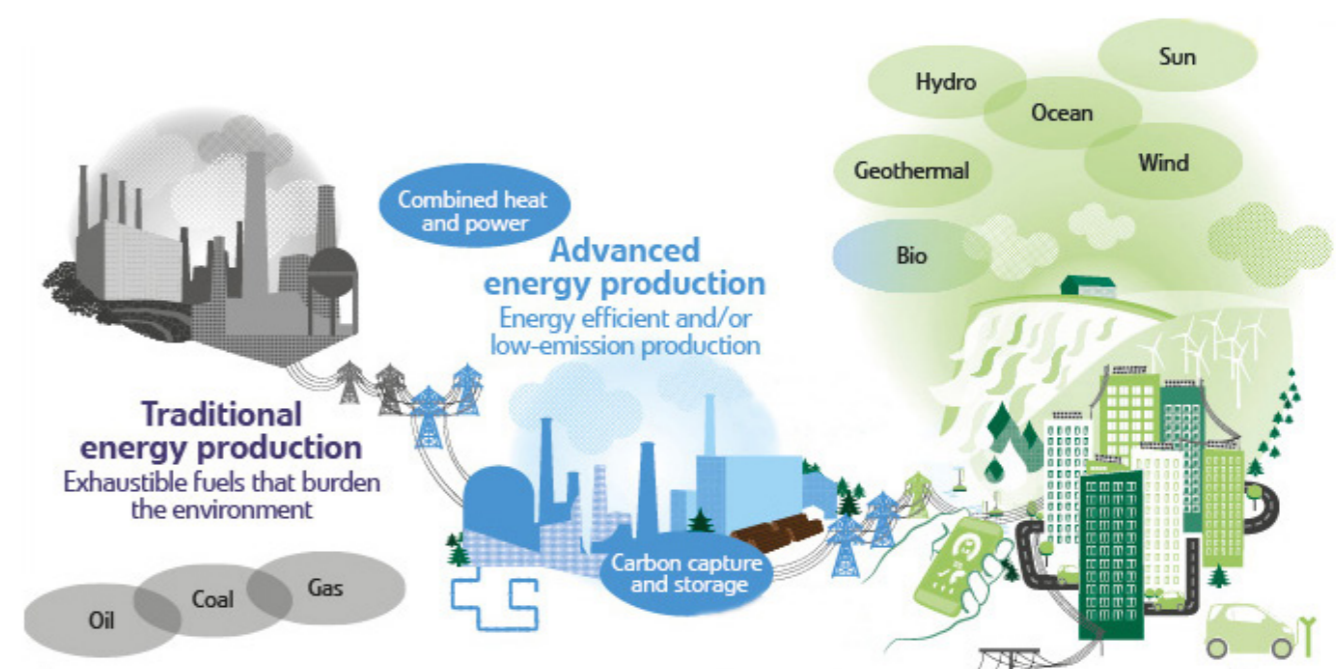
### Mitigation Options

**Increasing energy efficiency** of products and production e.g. steam systems, process heating systems (furnaces and boilers), and electric motor systems (e.g. pumps, fans, air compressor, refrigerators, material handling).

Adoption of **new energy production technology**  
e.g carbon capture and storage



### Transition to low energy sources



Emissions related to industrial energy use can be reduced by around 90% through transition to low carbon fuels

### Reuse, recycling and energy utilization of waste



Approximately one tenth of all paper, a quarter of all steel, and a half of all aluminum produced each year is scrapped

### Reducing yield losses in materials production, manufacturing and construction.

