

Biodiversity

At least 40% of the World's Economy and 80% of the need of the poor are derived from biological resources. The richer the diversity of life, the greater the opportunity for medical discoveries, economic development, and it also provide adaptive responses to climate change. Conserving and sustainably managing biodiversity is critical to addressing climate change.

Facts

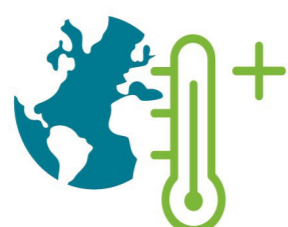
- Climate change can alter species habitats, how they interact, and the timing of biological events, which could fundamentally transform current ecosystems and food webs
- Climate change can overwhelm the capacity of ecosystems to mitigate extreme events and disturbance, such as wildfires, floods, and drought
- Projected warming could greatly increase the rate of species extinctions, especially in sensitive regions



Increased extreme weather events

Increased vulnerability of ecosystems to climate variability

Higher instances of wildfires



Warming ocean temperatures

Coral bleaching

Changes in species distribution

Reduction in maximum body size of warm water species

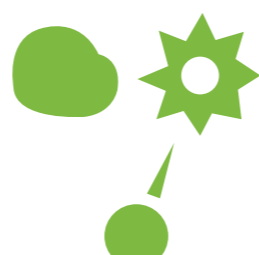


Changing precipitation and melting snow / ice

Increased water stress

Reduction in water quality

Increased vulnerability



Changes in air temperatures and seasonal patterns

Changes in timing of life events

Shifts in migration patterns

Increased tree mortality in some areas

Observed Impacts in Mauritius

- Change in rainfall pattern on the East coast of Mauritius over a 40-year period may have affected the breeding success and productivity of Mauritius kestrels
- Increasing frequency of storms of tropical cyclone strength or higher may have affected the hatchability and chick survival of Round Island petrels
- Frequent fish mortality suspected to be linked to climate change and occurrence of coral bleaching which could reduce coral biodiversity

Adaptation options

- Proper management and establishment of protected areas
- Coastal and wetland maintenance and restoration
- Adaptive forest management
- Ecotourism activities
- Promote Bio farming and agro forestry
- Adoption of integrated land use planning

